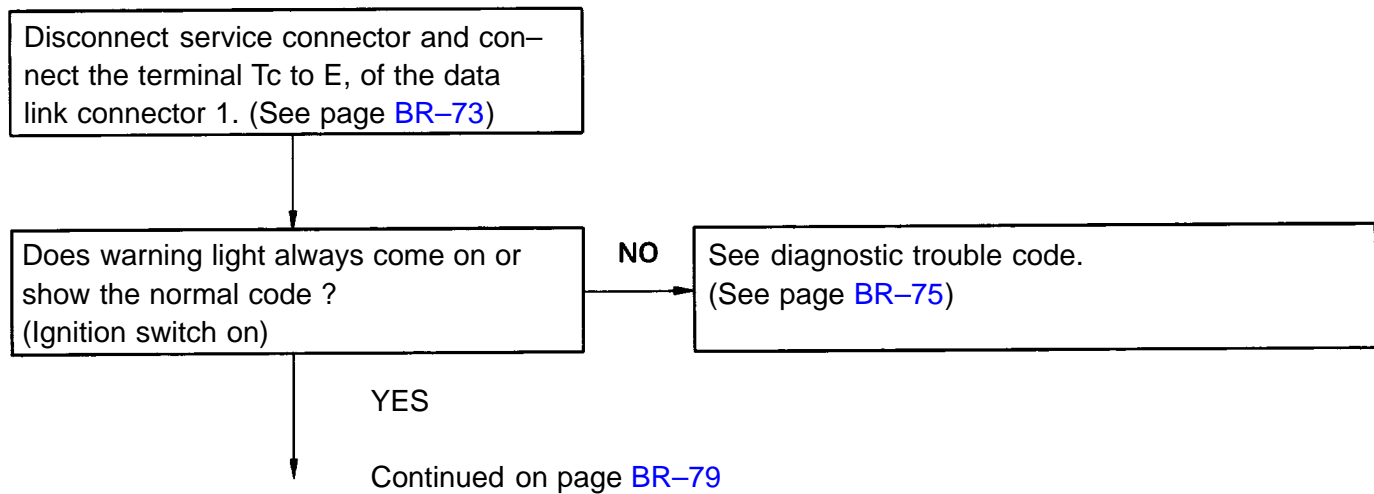
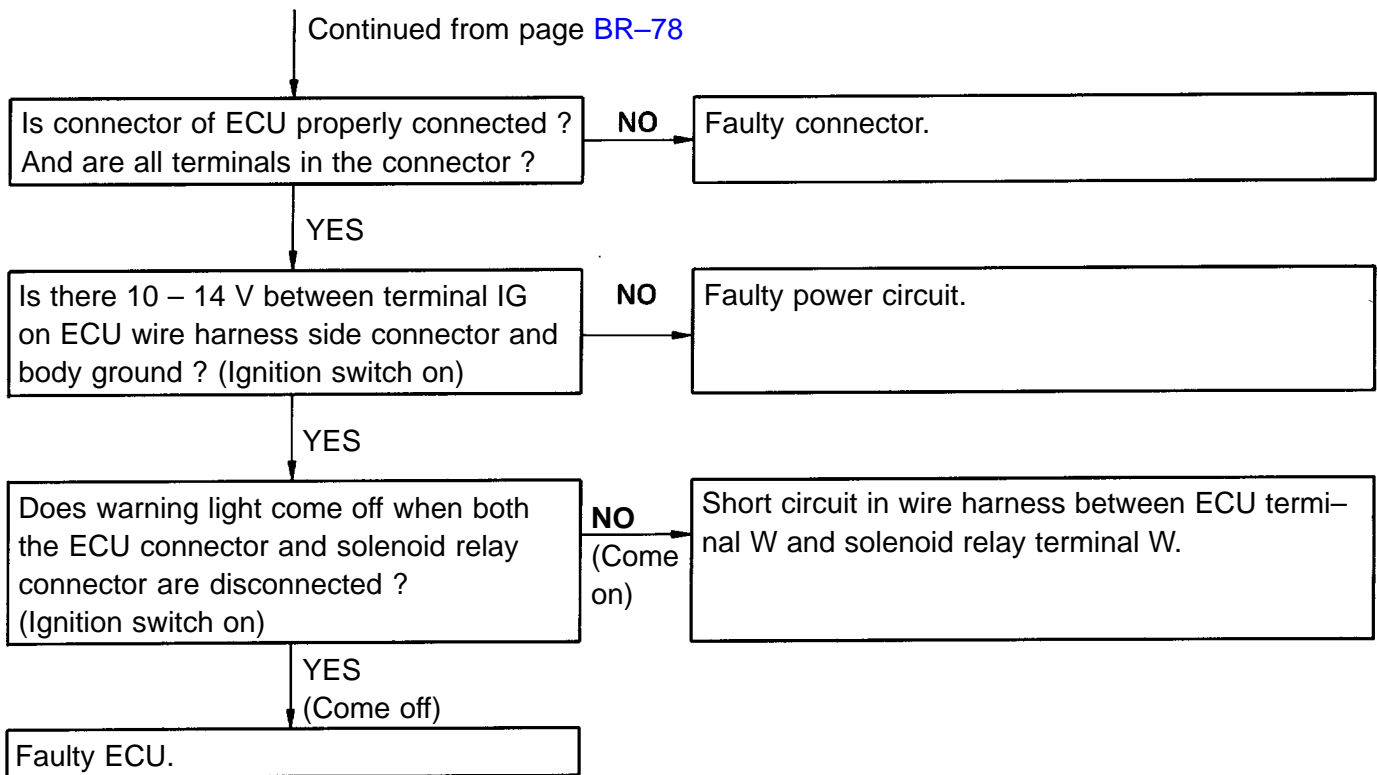


## Troubleshooting

Problem		No.
"REAR ANTILOCK" warning light	Always comes on after ignition switch is turned to ON.	1
	Does not come on for about 3 seconds after ignition switch on.	2
	Comes on and off.	3
	Comes on while running.	1
Brake working	Brakes pull.	4
	Braking inefficient.	4
	Rear-Wheel Anti-Lock Brake System operates at ordinary braking.	4
	Rear-Wheel Anti-Lock Brake System operates just before stopping at ordinary braking.	4
	Brake pedal pulsates abnormally while Rear-Wheel Anti-Lock Brake System is operating.	4
	Skidding noise occurs while Rear-Wheel Anti-Lock Brake System working. (Rear-Wheel Anti-Lock Brake System works inefficiently)	5

### 1 "REAR ANTILOCK" warning light comes on.





2

**"REAR ANTILOCK" warning light does not come on for about 2 seconds after ignition switch on.**

Disconnect service connector and ground the terminal W of the wire harness side connector. (Ignition switch on)

Does warning light come on ?

NO

Bulb burned out or open circuit in wire harness between warning light and service connector terminal W.

YES

Disconnect connector from ECU and solenoid relay, and ground terminal W of ECU wire harness side connector. (ignition switch on)

Does warning light come on ?

NO

Open circuit in wire harness between ECU terminal W and warning light.

YES

With ignition switch off, disconnect solenoid relay connector, and check continuity between terminal W and BS on solenoid relay side.

Reverse tester leads and check again. Is there one way continuity between terminals ?

NO

Short circuit in solenoid relay inside diode.

YES

Faulty ECU.

HINT: If the diode is short-circuited, a malfunction at ECU terminal W will occur.

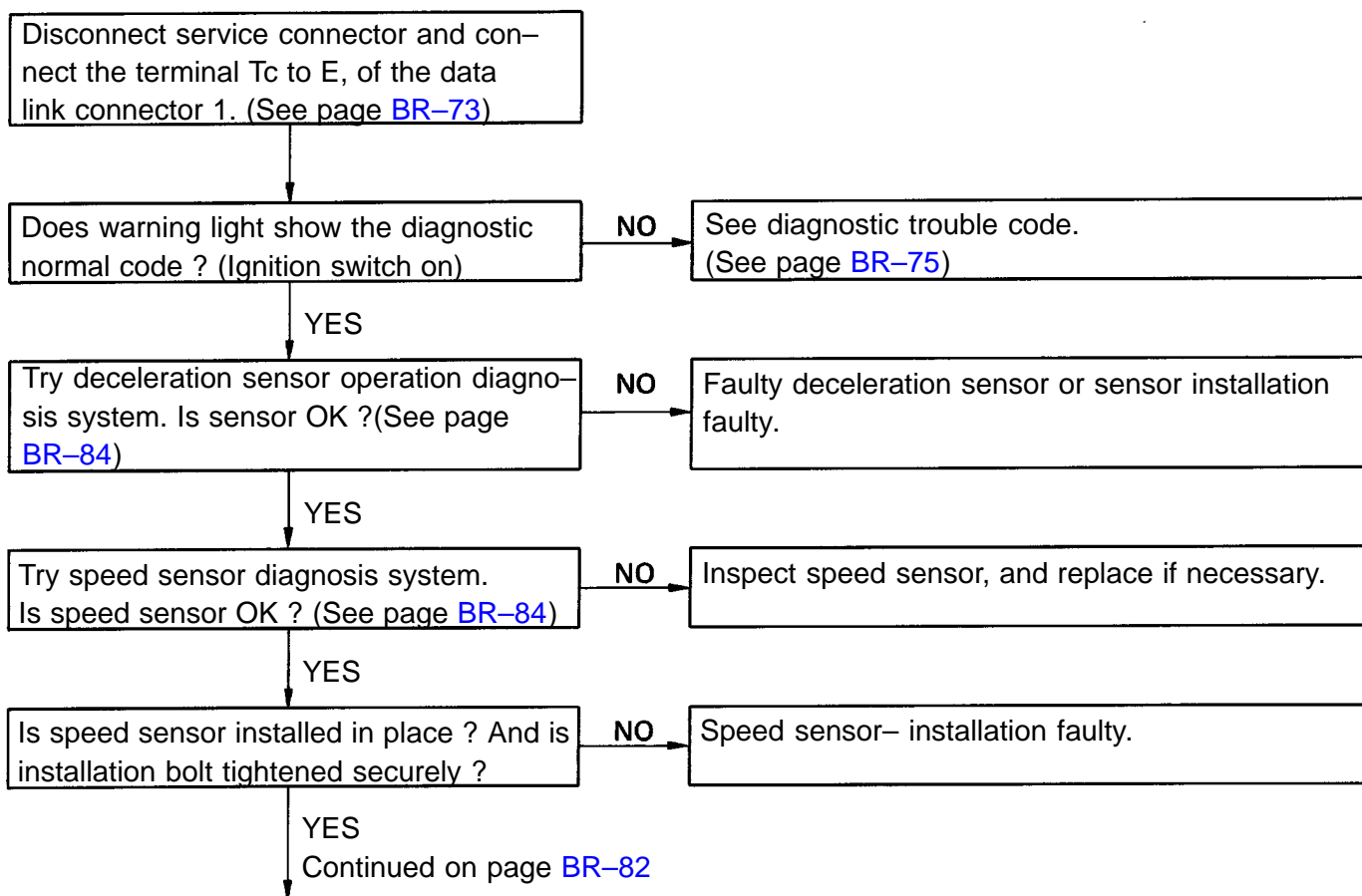
When inspecting the terminal, connect the ECU connector and disconnect solenoid relay connector. Then turn the ignition switch on, and check that the warning light goes on. If it does, the ECU terminal is OK.

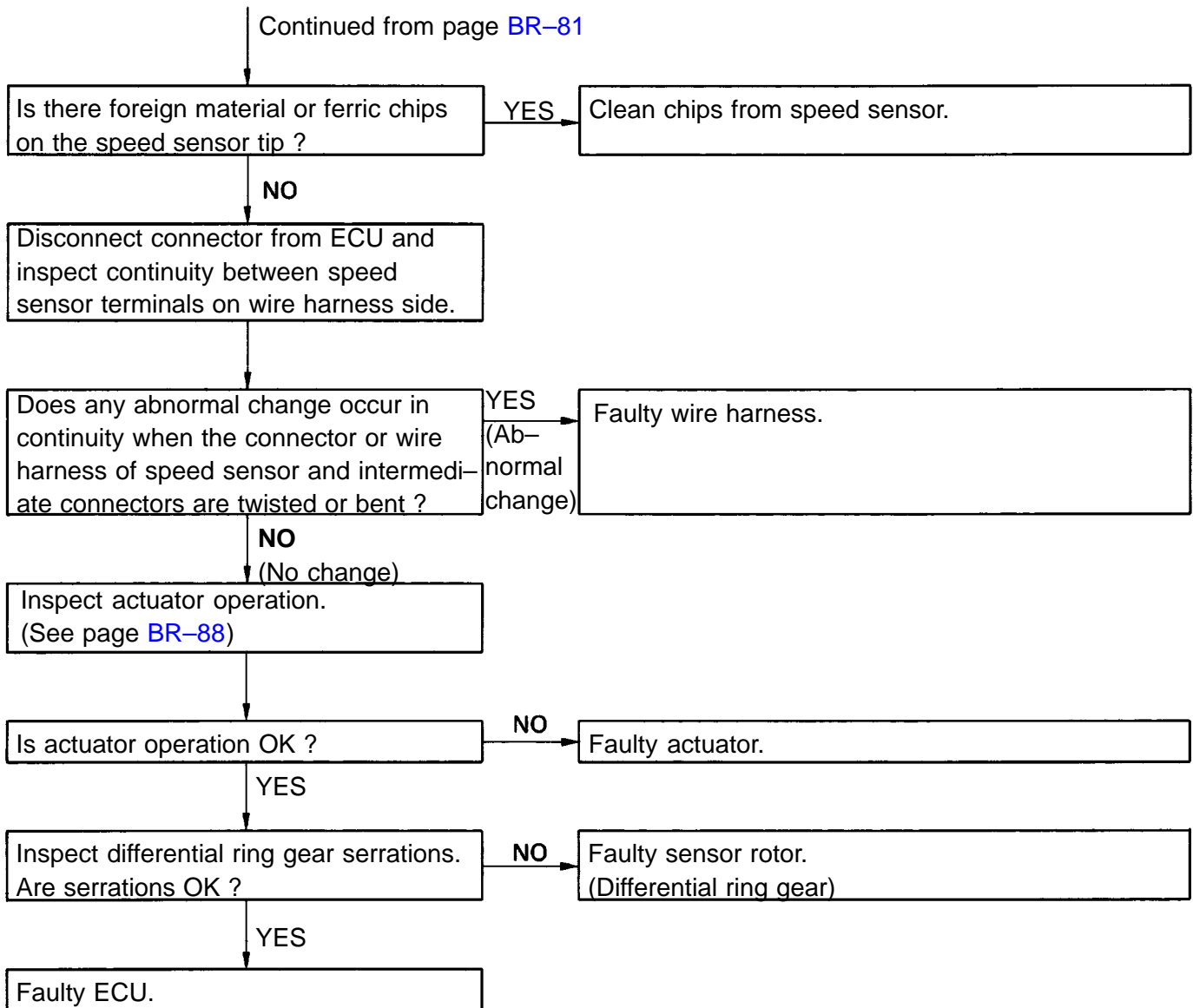
### 3 "REAR ANTILOCK" warning light comes on and off .

- Short circuit in wire harness between ECU terminal TS and data link connector 1 terminal Ts.
- Short circuit in wire harness between ECU terminal TC and data link connector 1 terminal Tc.

4

- **Braking inefficient.**
- **Rear-Wheel Anti-Lock Brake System operates at ordinary braking.**
- **Rear-Wheel Anti-Lock Brake System operates just before stopping at ordinary braking.**
- **Brake pedal pulsates abnormally while Rear-Wheel Anti-Lock Brake System working.**





**5 Rear-Wheel Anti-Lock Brake System works inefficiently.**

Disconnect service connector and connect the terminal Tc to E , of the data link connector

1. (See page BR-73)

Does warning light show the diagnostic normal code ?  
(Ignition switch on)

NO

See diagnostic trouble code.  
(See page BR-75)

YES

Is there battery positive voltage between ECU terminal STP and body ground when depressing brake pedal ?

NO

Open circuit in stop light switch and/or wire harness.

YES

Inspect actuator.  
(See page BR-87)